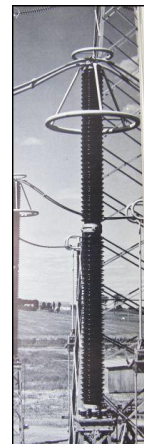
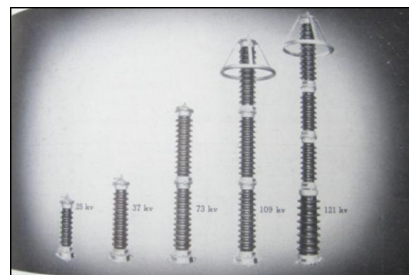
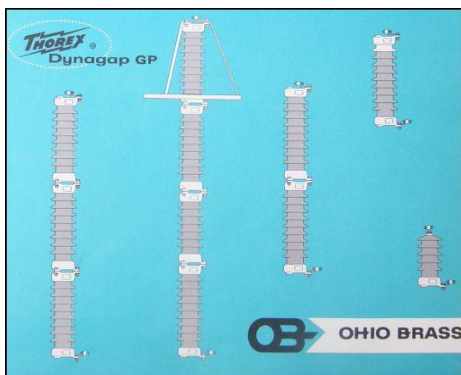
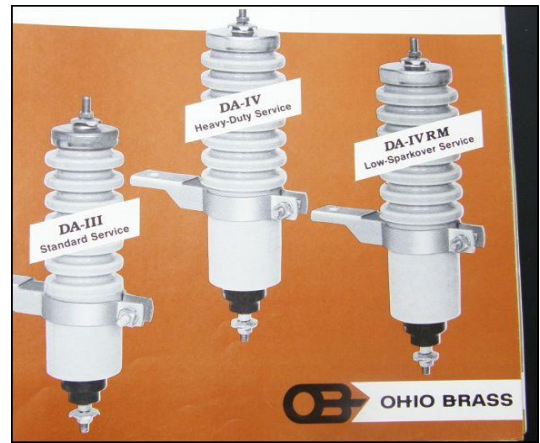
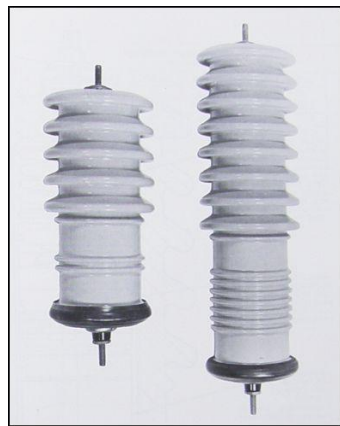
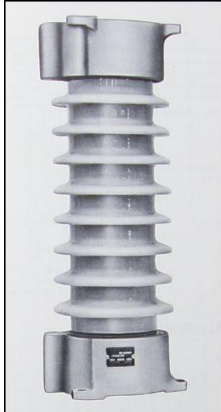
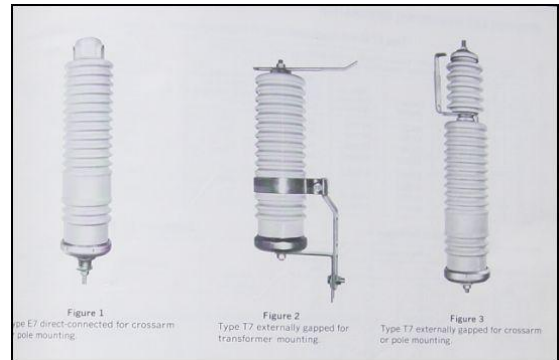
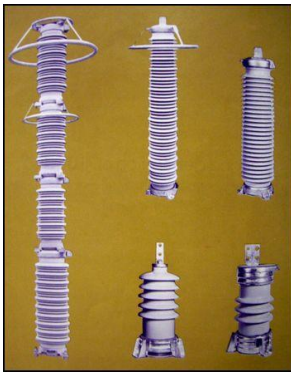


Silicon Carbide Porcelain Housed Arrester Identification Guide



SiC Arrester Identification Guide

The identification of old Porcelain Housed SiC Arresters is not difficult if a few guidelines are followed.

1. Color

If the porcelain is brown and located in the US, it is likely a SiC arrester. A closer inspection is warranted.

If the color of the porcelain is gray, there is a chance it is silicon carbide if manufactured before 1987.

2. Size

Height

If the arrester is as tall or taller than the transformer bushing it is next to, it is most likely a Sic Arrester.

3. Manufacturing Date

If it is manufactured before 1977, it will be a SiC type arrester

If it is manufactured between 1977-1987 it is likely a SiC type arrester and warrants a closer look.

4. If the name on the name plate is as follows, it will be an SiC type arrester

McGraw Edison G Arrester, Type F, Type SS, Type E , Type RP and RP2

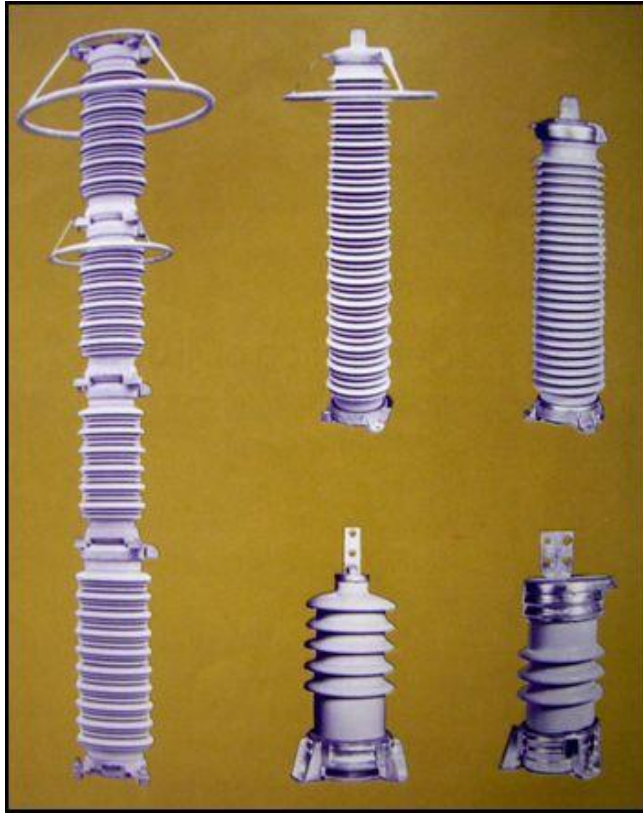
Ohio Brass Thorax Arrester, Dynagap, Multirester, Type DAIII and Type DAIV

GE Thyrite Arrester, Alugard

Westinghouse Surgemaster, Type CPL, Type SV, SV, LVBB, Autovalve

Joslyn Type J, Type Q and Type RS

Identifying Sic Arresters --- A Guide



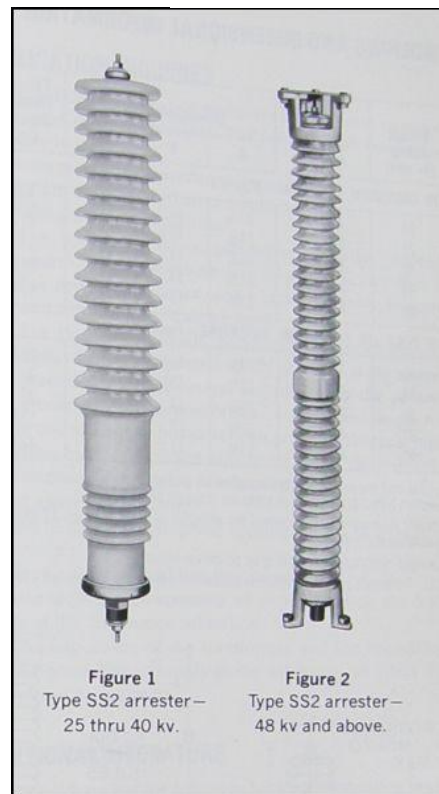
GE Alugard Arrester



GE Thyrite SiC Arrester

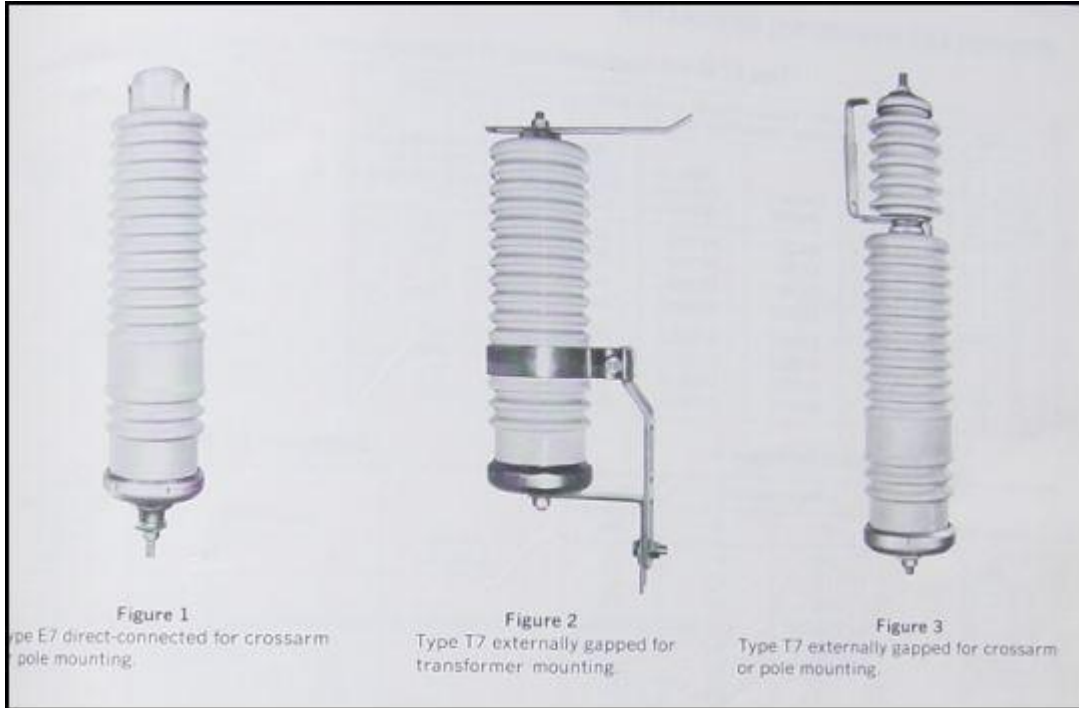


McGraw Type G Arrester

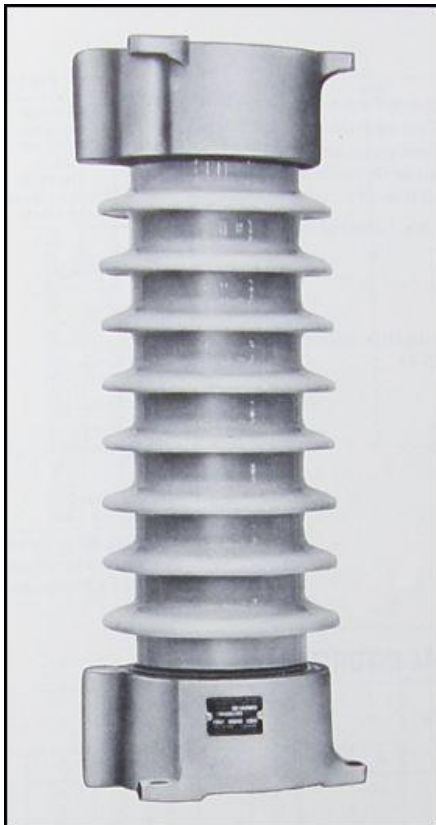


McGraw Edison Type SS2

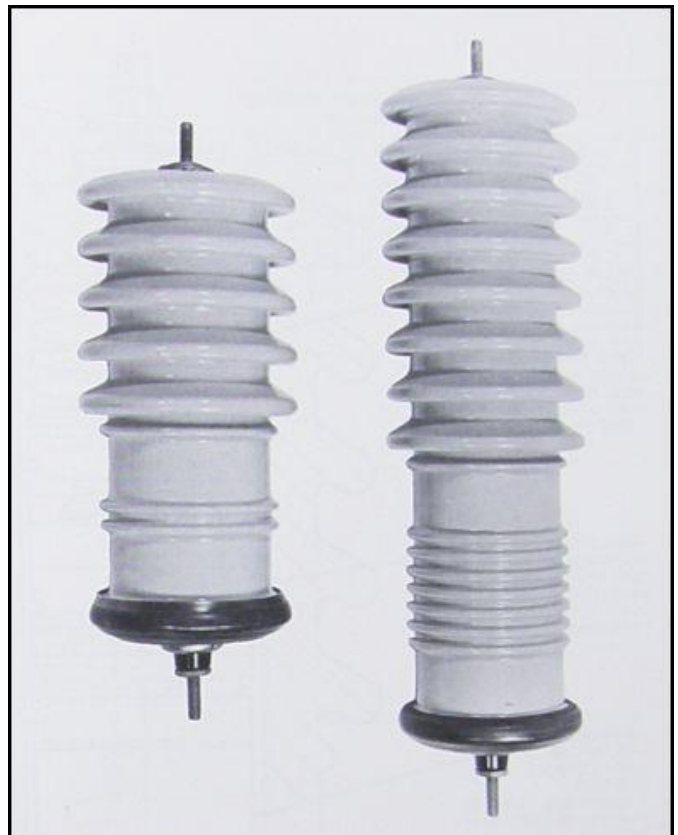
Identifying Sic Arresters --- A Guide



McGraw Edison Type E7 and T7



McGraw Edison F2

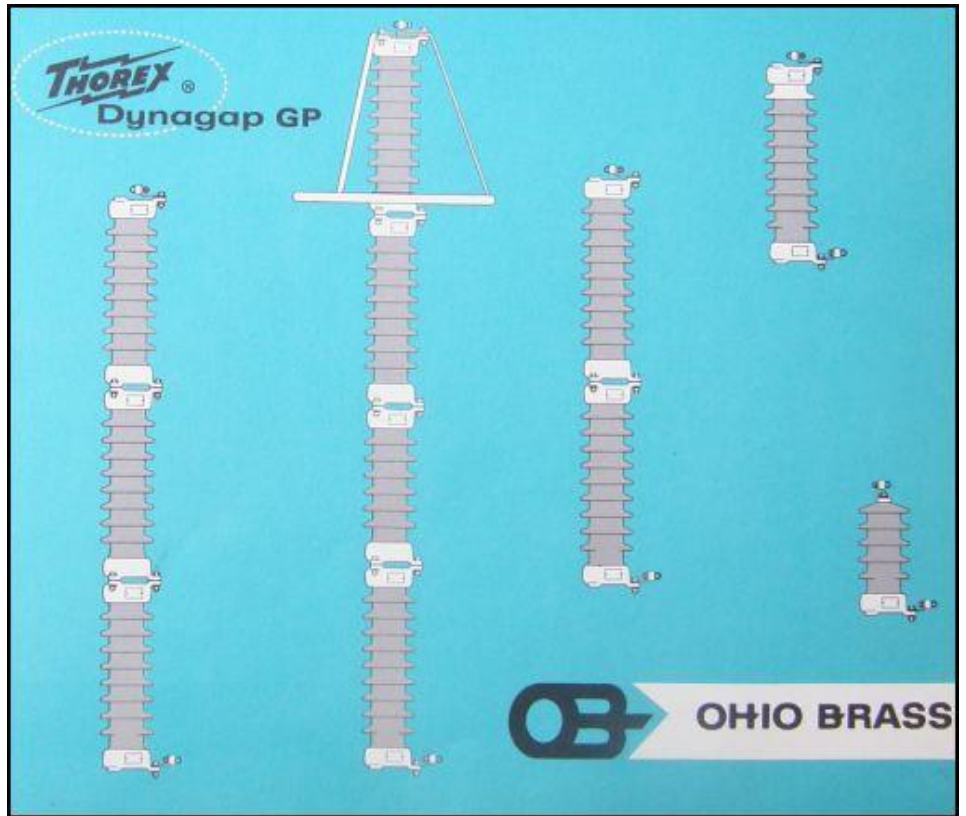


McGraw Edison Type RP and RP2

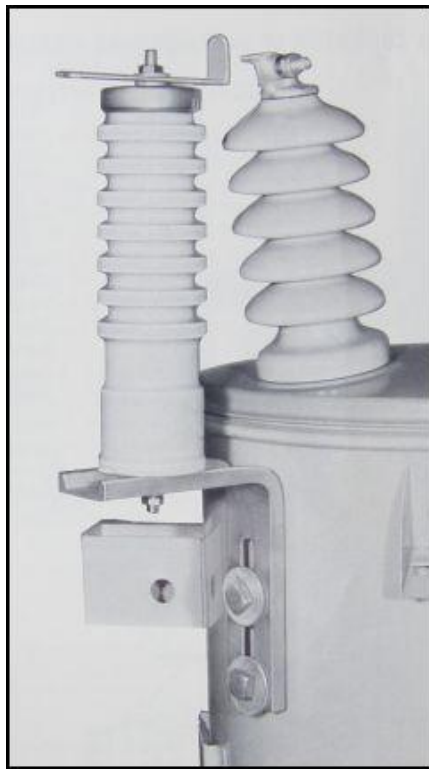
Identifying Sic Arresters --- A Guide



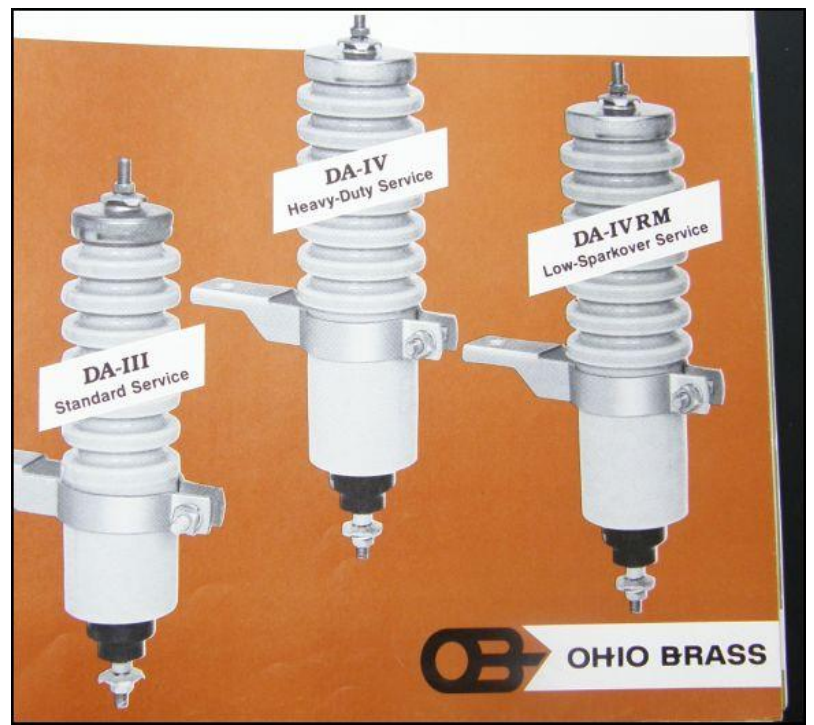
McGraw Edison Type E7



Ohio Brass Dynagap

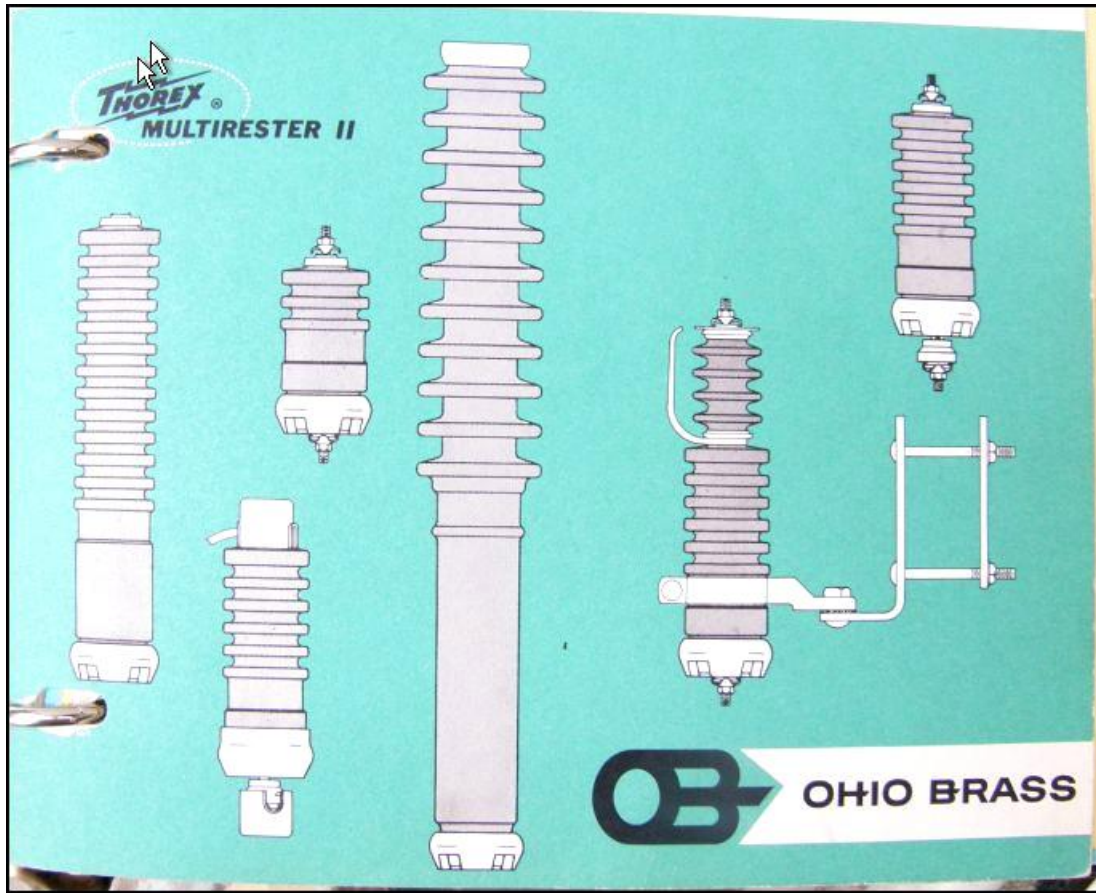


Ohio Brass Type DA 3



Ohio Brass Type DA

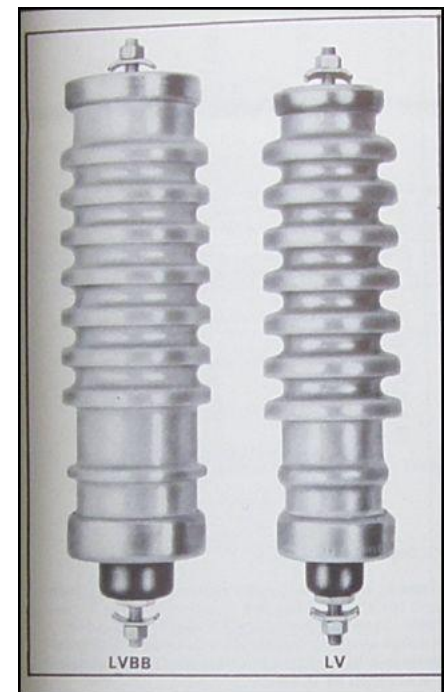
Identifying Sic Arresters --- A Guide



Ohio Brass Thorex Multirrester II

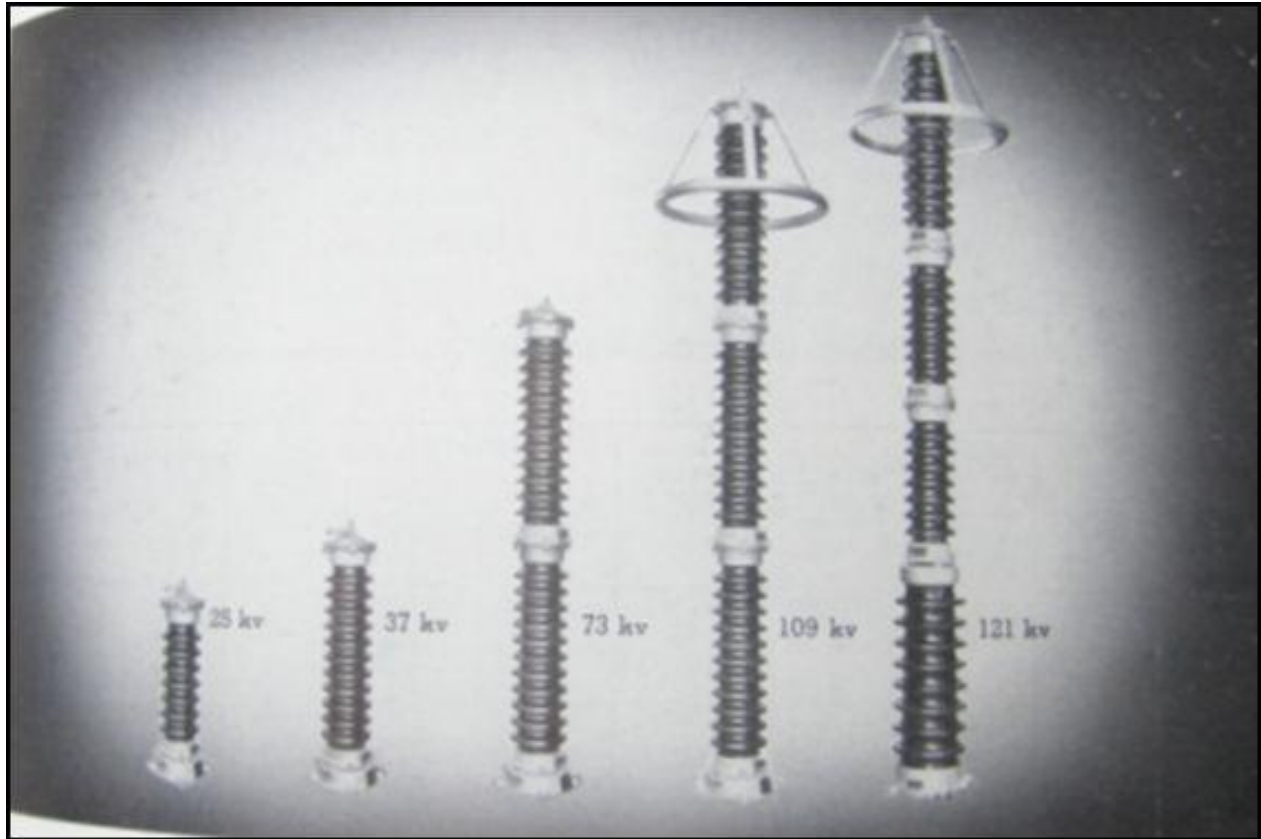


Westinghouse Type SV and SVS



Westinghouse Type LV and LVSS

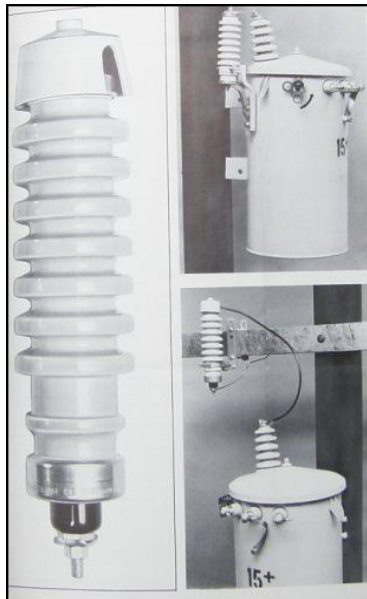
Identifying Sic Arresters --- A Guide



Westinghouse Type SV and SVE



Westinghouse Type Surgemaster

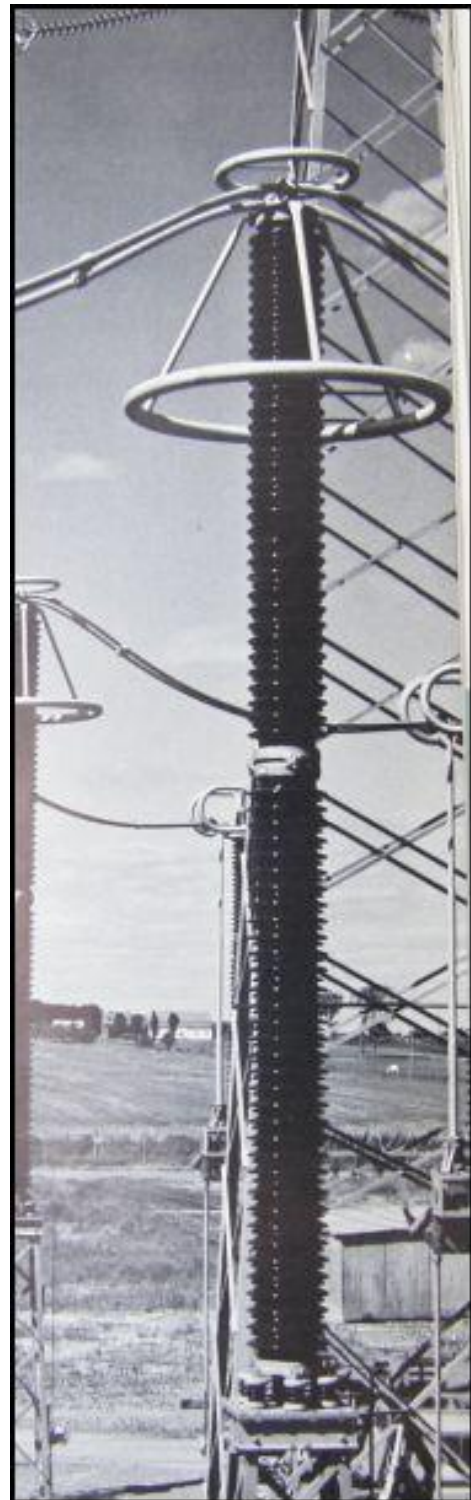


Westinghouse Type Surgemaster

Identifying Sic Arresters --- A Guide

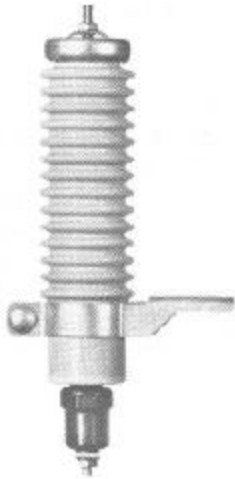


Westinghouse Type CPL



Ohio Brass Thorex Dynagap Arrester

Identifying Sic Arresters --- A Guide



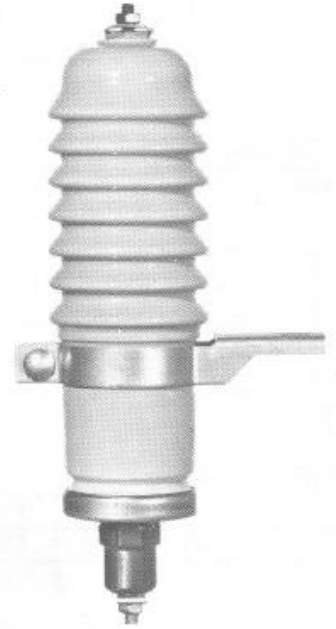
QS TYPE



QL TYPE



QG TYPE



J9238-Q



J9238-IQ

[Joslyn Arresters on this page](#)